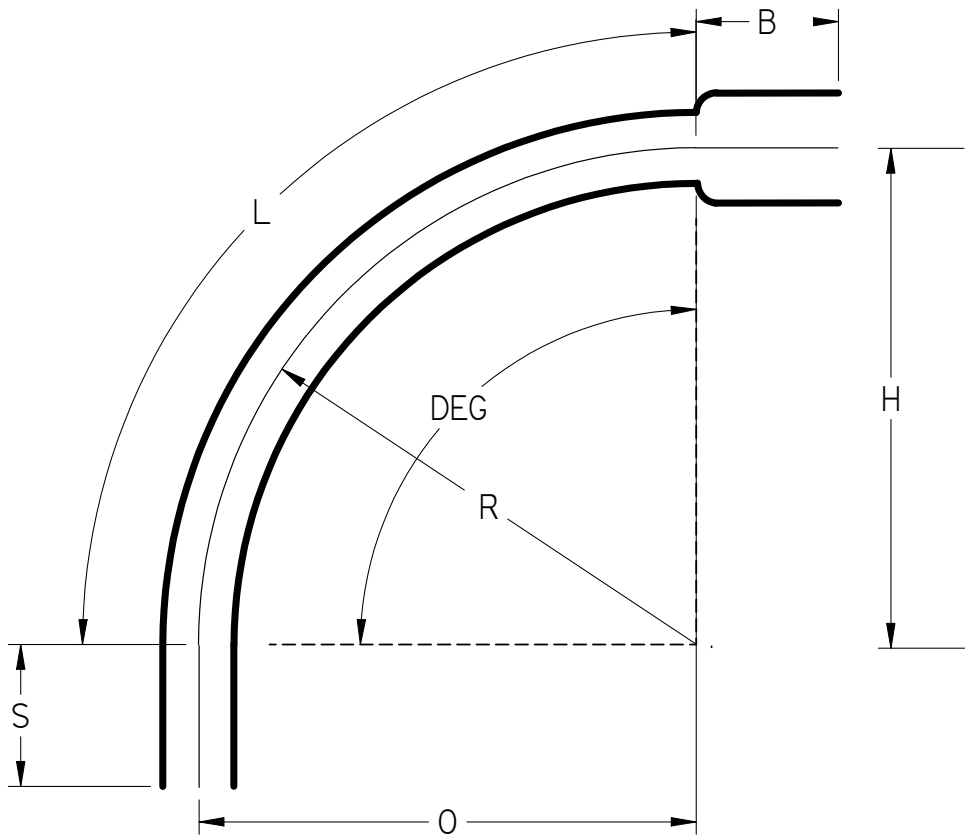
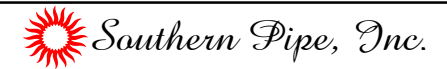


Part Number	Size	Deg	R	O	H	S Min	B Min	L
22408	3/4"	90°	36	36	36	1.5"	1.5	56.5
22410	1"	90°	36	36	36	1.875"	1.5	56.5
22412	1 1/4"	90°	36	36	36	2"	2	56.5
22415	1 1/2"	90°	36	36	36	2"	1.375	56.5
22420	2"	90°	36	36	36	2"	1.75	56.5
22425	2 1/2"	90°	36	36	36	3"	3	56.5
24730	3"	90°	36	36	36	3.125"	2.875	56.5
22435	3 1/2"	90°	36	36	36	3.25"	3.125	56.5
24740	4"	90°	36	36	36	3.375"	3.375	56.5
22450	5"	90°	36	36	36	3.625"	4	56.5
24760	6"	90°	36	36	36	3.75"	5	56.5



Ⓢ Listed 651  
 NEMA TC3  
 See NEC Article 352 for Usage



90° Elbows Belled End Schedule 40 36" Radius

UNLESS OTHERWISE SPECIFIED  
 DIMENSIONS ARE IN INCHES  
 ANGLES ±2.0°

	NAME	DATE
DRAWN	K. Mitchell	03/28/13
CHECKED		
ENG APPR		
FILE: 90 DEG SCH 40 36 RAD BE.dft		REV 10