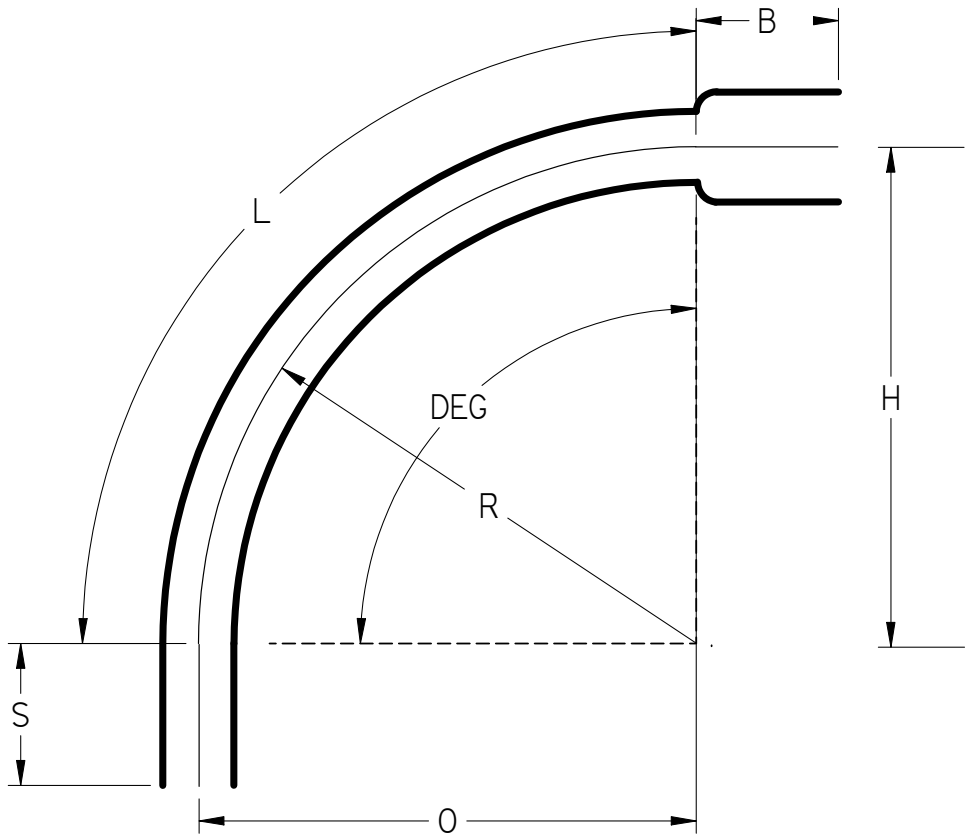
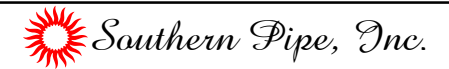


Part Number	Size	Deg	R	O	H	S Min	B Min	L
22510	1"	90°	48	48	48	1.875"	1.5	75.375
22512	1 1/4"	90°	48	48	48	2"	2	75.375
22515	1 1/2"	90°	48	48	48	2"	1.375	75.375
22620	2"	90°	48	48	48	2"	1.75	75.375
22625	2 1/2"	90°	48	48	48	3"	3	75.375
22630	3"	90°	48	48	48	3.125"	2.875	75.375
22635	3 1/2"	90°	48	48	48	3.25"	3.125	75.375
22640	4"	90°	48	48	48	3.375"	3.375	75.375
22650	5"	90°	48	48	48	3.625"	4	75.375
22660	6"	90°	48	48	48	3.75"	5	75.375
22680*	8"	90°	48	48	48	6.625"	6.75	75.375

*8" Not UL Listed



UL Listed 651
 NEMA TC3
 See NEC Article 352 for Usage



90° Elbows Belled End Schedule 40 48" Radius

UNLESS OTHERWISE SPECIFIED
 DIMENSIONS ARE IN INCHES
 ANGLES ±2.0°

	NAME	DATE
DRAWN	K. Mitchell	03/28/13
CHECKED		
ENG APPR		
FILE: 90 DEG SCH 40 48 RAD BE.dft		REV 10