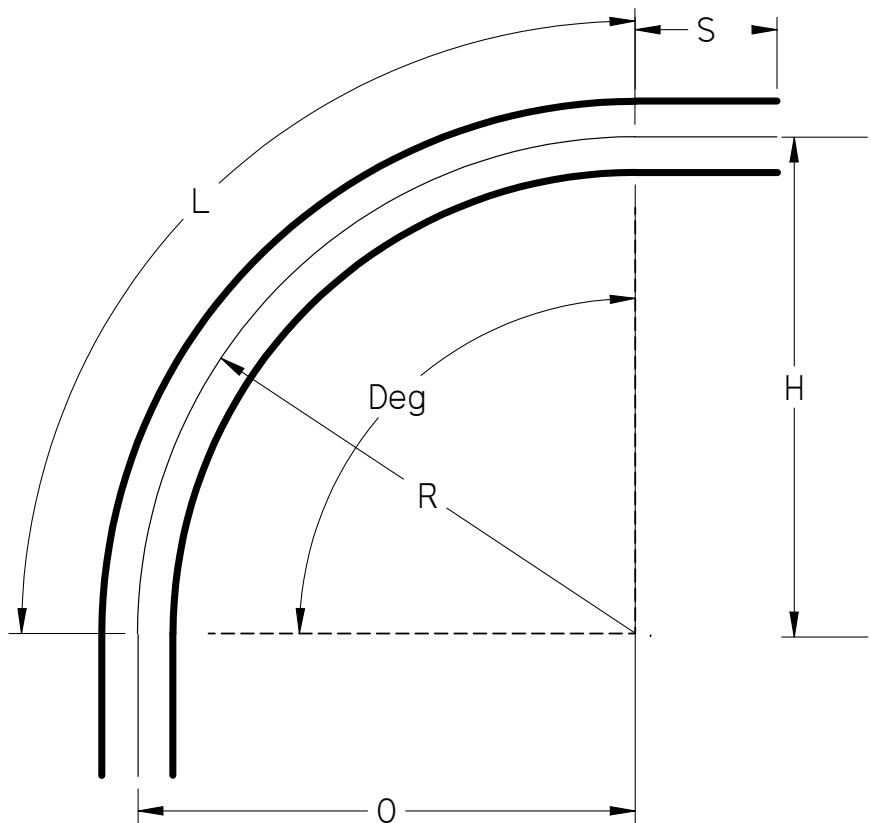
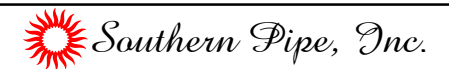


Part Number	Size	Deg	R	O	H	S Min	L
43610	1"	90°	48	48	48	1.875"	75.375
42612	1 1/4"	90°	48	48	48	2"	75.375
42615	1 1/2"	90°	48	48	48	2"	75.375
42620	2"	90°	48	48	48	2"	75.375
42625	2 1/2"	90°	48	48	48	3"	75.375
42630	3"	90°	48	48	48	3.125"	75.375
42635	3 1/2"	90°	48	48	48	3.25"	75.375
42640	4"	90°	48	48	48	3.375"	75.375
42650	5"	90°	48	48	48	3.625"	75.375
42660	6"	90°	48	48	48	3.75"	75.375
40680*	8"	90°	48	48	48	6.625"	75.375

\*8" Not UL Listed



UL Listed 651  
 NEMA TC3  
 See NEC Article 352 for Usage



90° Elbows Plain End Schedule 40 48" Radius

UNLESS OTHERWISE SPECIFIED  
 DIMENSIONS ARE IN INCHES  
 ANGLES ±2.0°

	NAME	DATE
DRAWN	K. Mitchell	03/27/13
CHECKED		
ENG APPR		
FILE: 90 DEG SCH 40 48 RAD PE.dft		REV 10