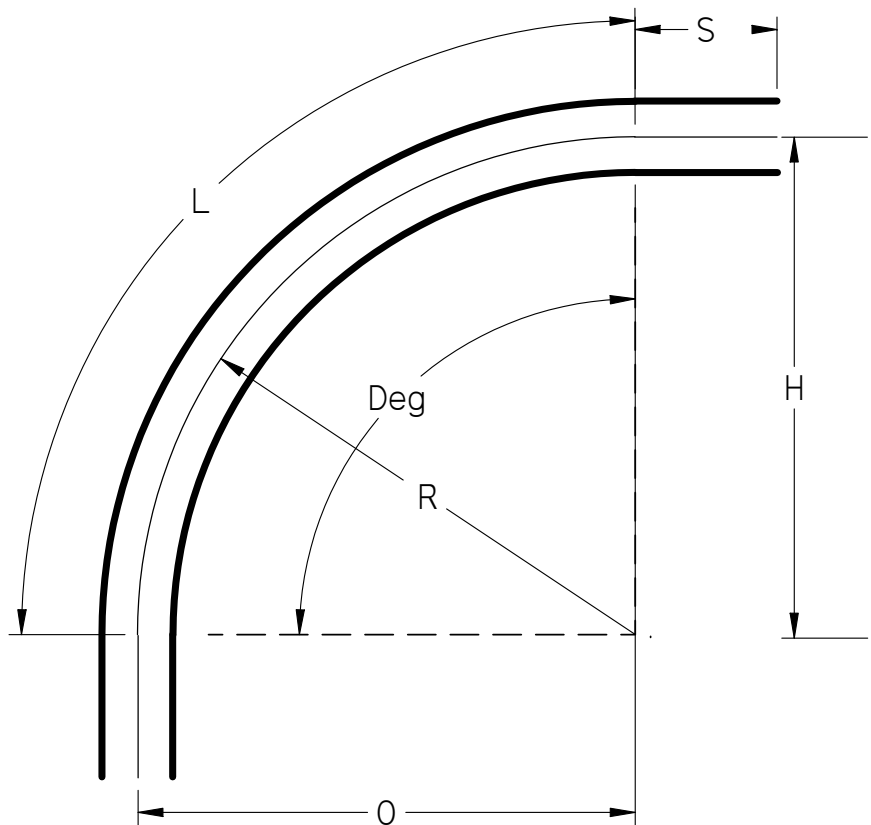
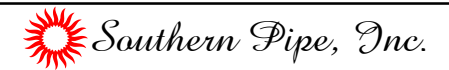


Part Number	Size	Deg	R	O	H	S Min	L
52610	1"	90°	48	48	48	1.875"	75.375
52612	1 1/4"	90°	48	48	48	2"	75.375
52615	1 1/2"	90°	48	48	48	2"	75.375
52620	2"	90°	48	48	48	2"	75.375
52625	2 1/2"	90°	48	48	48	3"	75.375
52630	3"	90°	48	48	48	3.125"	75.375
52635	3 1/2"	90°	48	48	48	3.25"	75.375
52640	4"	90°	48	48	48	3.375"	75.375
52650	5"	90°	48	48	48	3.625"	75.375
52660	6"	90°	48	48	48	3.75"	75.375



UL Listed 651
 NEMA TC3
 See NEC Article 352 for Usage



90° Elbows Plain End Schedule 80 48" Radius

UNLESS OTHERWISE SPECIFIED
 DIMENSIONS ARE IN INCHES
 ANGLES ±2.0°

	NAME	DATE
DRAWN	K. Mitchell	04/01/13
CHECKED		
ENG APPR		
FILE: 90 DEG SCH 80 48 RAD PE.dft		REV 10