



Southern Pipe, Inc.

P. O. Box 606, 135 Random Drive, New London, NC 28127

Phone: 704-463-5202 Fax: 704-463-5203 www.southern-pipe.com

“So-Lite”

“CELLULAR CORE” SCHEDULE 40 CONDUIT

With *“Powerline”™*

SIZE	PART NUMBER	DESCRIPTION	MIN WALL	O.D.	WEIGHT PER 100'	PALLET QTY
3"	21430 25430	10 FT BE 20 FT BE	.216	3.500	116	880 1760
4"	21440 25440	10 FT BE 20 FT BE	.237	4.500	163	570 1140
5"	21450 25450	10 FT BE 20 FT BE	.258	5.563	221	380 760
6"	21460 25460	10 FT BE 20 FT BE	.280	6.625	286	260 520
* 8"	21480 25480	10 FT BE 20 FT BE	.322	8.625	440	140 280

For easy identification, all *Southern Pipe, Inc.* Cellular Core Conduit is marked with a blue *“Powerline”™* from spigot to bell end.



Southern Pipe, Inc. “Cellular Core” Schedule 40 Conduit is

UL Listed, RUS Listed, Rated 90° C and produced to the following standards:

* 8” Sch 40 is a non UL LISTED product

Physical Dimensions

Underwriters Laboratory, Inc.® (UL)

National Electrical Manufacturers Association (NEMA)

National Electrical Manufacturers Association (NEMA)

UL 651

TC-2

TC-18

Physical Testing

American Society for Testing and Materials (ASTM)

ASTM F-891



Manufacturers of Quality PVC Electrical Conduit

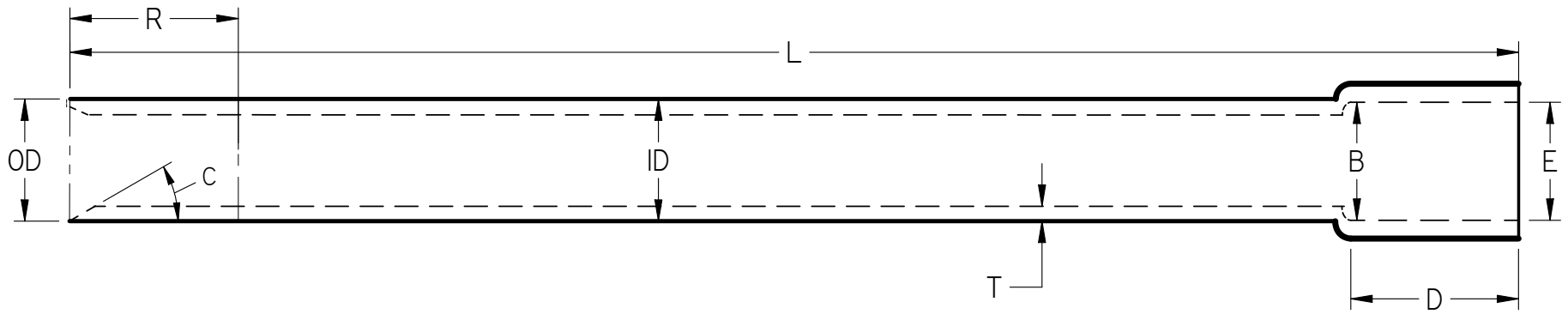
Southern Pipe, Inc. rigid nonmetallic cellular core Schedule 40 PVC (EPC-40-PVC) conduit (*So-Lite*[™]) is manufactured to meet or exceed ANSI/UL 651, 90° C, NEMA TC-2, and ASTM F-891. So-Lite conduit is available UL Listed and RUS Listed in sizes 3”, 4”, 5” and 6” and non-UL Listed 8”. So-Lite conduit is acceptable as nonmetallic raceway for conductors and cable in accordance with Article 352 of ANSI/NFPA 70, “National Electric Code”. So-Lite conduit is suitable for aboveground use indoors or outdoors exposed to sunlight and weather where not subject to physical damage, and for underground use by direct burial or encasement in concrete.

Each piece bears the UL listing number (39GX), is marked RUS Listed, and has permanent markings to identify manufacturer, date and shift manufactured.

Samples are tested by in-house quality control along with representatives of Underwriters Laboratories to assure compliance to these specifications.

The PVC material used to manufacture Southern Pipe, Inc. conduit meets or exceeds compound cell classification 12254B as defined by ASTM D 1784 Standard Specification, Rigid Polyvinyl Chloride Compounds for Cell Classification 12454B (Formerly Type 1, Grade 1 and also designated PVC 1120).

All products manufactured by Southern Pipe, Inc. are produced in New London, North Carolina.




Southern Pipe Part Number	Trade Size	T Min Wall Thickness	OD Outside Diameter	ID Inside Diameter	E Bell Entrance ID	B Bell Bottom ID	D Min Bell Depth	C Chamfer Angle	R Reference Mark	L Total Length
21430	3"	0.216	3.500	3.008	3.515	3.492	3.625	30°	3.625	120
21440	4"	0.237	4.500	3.961	4.515	4.491	4.125	30°	4.125	120
21450	5"	0.258	5.563	4.975	5.593	5.553	1.750	30°	4.750	120
21460	6"	0.280	6.625	5.986	6.658	6.614	5.750	30°	5.750	120
21480*	8"	0.322	8.625	7.853	8.670	8.610	6.750	30°	6.750	120
25430	3"	0.216	3.500	3.008	3.515	3.492	3.625	30°	3.625	240
25440	4"	0.237	4.500	3.961	4.515	4.491	4.125	30°	4.125	240
25450	5"	0.258	5.563	4.975	5.593	5.553	1.750	30°	4.750	240
25460	6"	0.280	6.625	5.986	6.658	6.614	5.750	30°	5.750	240
25480*	8"	0.322	8.625	7.853	8.670	8.610	6.750	30°	6.750	240

*8" is Non UL-Listed

 Listed 651
 NEMA TC 2
 Sunlight Resistant
 See NEC Article 352 for Usage

RUS Listed
 NEMA TC 18
 90° C Wire

 *Southern Pipe, Inc.*

Schedule 40 Cellular Core Rigid Non-Metallic PVC Conduit

	NAME	DATE
DRAWN	K. Mitchell	04/01/13
CHECKED		
ENG APPR		
FILE: SCH 40 So-Lite for Brochure.dwg REV 10		

UNLESS OTHERWISE SPECIFIED
 DIMENSIONS ARE IN INCHES
 ALL Dimensions are Nominal

FOR EASY IDENTIFICATION, ALL CELLULAR CORE CONDUIT IS MARKED WITH A BLUE *Powerline*® from spigot to bell